

### Features

- Wireless Two-Way Communication
- View Data in Real Time
- 3 Year Battery Life
- Battery Life Indicator
- Field Upgradeable
- Audible and LED Alarm Indicators
- Cumulative Alarm Delay

### Benefits

- Fast Installation
- Minimal Long-Term Maintenance
- Full Communication From One PC
- Time and Money Saving with Battery Management
- Reduction of False Alarms

### Applications

- Clean Rooms
- Laboratories and Hospitals
- Medical and Pharmaceutical
- Warehouse mapping
- Storage of Perishable Goods
- Chemical Storage
- Incubator Monitoring
- Greenhouse Monitoring
- HVAC
- Bakery/Cereal Production

The Element HT is a wireless temperature and humidity data logger with digital display. The Element HT is ideal for both HVAC studies and everyday temperature and humidity monitoring in both grow and storage rooms. Designed with external humidity and RTD based temperature sensors, the device provides a fast response time for both parameters.

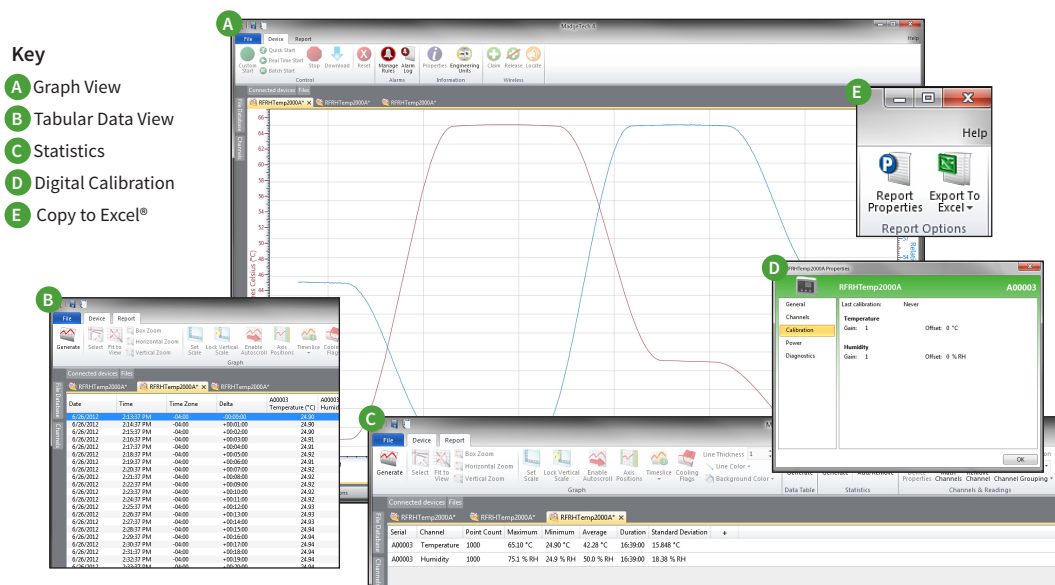
For customer convenience, functions include starting, stopping and downloading from the device wirelessly from a PC with the use of an RFC1000. This allows customers to quickly access data and spend less time maintaining the device. Data can be provided in real time back to a central PC, or the device may be downloaded at periodic intervals. For real time monitoring on the go, simply connect the Element HT to MadgeTech Cloud Services, allowing data to be accessed from any internet enabled device. The digital display provides the current reading for both the humidity and temperature channels with minimum, maximum and average statistics accessible for a quick snapshot of the logged data.



The Element HT features user programmable alarm settings for both temperature and humidity parameters. An audible buzzer and LED alarm indicator notifies users when the temperature or humidity is above or below the threshold set in the alarm. This allows growers to take action faster, saving plants, time and money. Email and text alarms can also be configured and sent from within the software, allowing users to be notified almost anywhere.

The Element HT can be used as a single, wireless data logging system, or it can be expanded to a large scale system, which can include hundreds of data loggers measuring a number of areas (additional MadgeTech wireless data loggers and transceivers may be required). The Element HT utilizes the latest MadgeTech Software. MadgeTech Data Logger Software is a powerful, analytic tool. Data can be viewed in graphical or tabular formats and summary and statistics views are available for further analysis. The software features export to Excel®, data annotation, digital calibration and more.

## MadgeTech Data Logger Software



### Software Features:

- Multiple graph overlay
- Statistics
- Digital calibration
- Zoom in/ zoom out
- Lethality equations (F0, PU)
- Mean Kinetic Temperature
- Full time zone support
- Data annotation
- Min./Max./Average lines
- Data table view
- Automatic report generation
- Summary view

# Element HT Specifications\*

\*Specifications are subject to change without notice. Specific warranty remedy limitations apply. Call (603) 456-2011 or go to [madgetech.com](http://madgetech.com) for details.

## Temperature

<b>Internal Channel Temperature Range:</b>	-20 °C to +60 °C (-4 °F to +140 °F)
<b>Temperature Resolution:</b>	0.01 °C (0.018 °F)
<b>Calibrated Accuracy:</b>	±0.5 °C at 0 °C to +55 °C (± 0.9 °F at 32 °F to 131 °F)
<b>Response Time:</b>	t63 - 302 seconds to 63% of change t90 - 710 seconds to 90% of change

## Humidity

<b>Humidity Range:</b>	0 %RH to 95 %RH
<b>Humidity Resolution:</b>	0.1 %RH
<b>Humidity Calibrated Accuracy:</b>	±3.0 %RH 25 %RH to 75 %RH +20 °C to +40 °C Hysteresis Error 1 % typical, 3 % Maximum
<b>Response Time:</b>	2 minutes to 90% of change

## Wireless

<b>RF Frequency:</b>	2.45 GHz IEEE 802.15.4 ultra-low power wireless transceiver with fully bi-directional communication
<b>Band:</b>	ISM band 2.405-2.475 GHz
<b>Maximum Output Power:</b>	+0 dBm typical
<b>Receiver Sensitivity (RFC1000):</b>	-95 dBm typical
<b>Transmission Distance (to data loggers)</b>	<ul style="list-style-type: none"> <li><b>RFC1000, RFC1000-CE &amp; RFC1000-IP69K</b> 2,000 ft max. outdoors - line of sight unobstructed 500 ft max. indoors - typical urban environment</li> </ul>
<b>Transmission Distance (to other RFC1000's)</b>	<ul style="list-style-type: none"> <li><b>RFC1000</b> 4,000 ft max. outdoors - line of sight unobstructed 1,000 ft max. indoors - typical urban environment</li> <li><b>RFC1000-CE</b> 2,500 ft max. outdoors - line of sight unobstructed 700 ft max. indoors - typical urban environment</li> <li><b>RFC1000-IP69K</b> 4,000 ft max. outdoors - line of sight unobstructed 1,000 ft max. indoors - typical urban environment</li> </ul>

## General

<b>Reading Rate:</b>	1 reading every second up to 1 reading every 24 hours
<b>Memory:</b>	16,128 per channel
<b>LED Functionality:</b>	<ul style="list-style-type: none"> <li>Green LED blinks every 5 seconds to indicate unit is logging</li> <li>Blue LED blinks every 15 seconds to indicate unit is in wireless mode</li> <li>Red LED blinks every 1 second to indicate alarm condition</li> </ul>
<b>Wrap Around:</b>	Yes
<b>Start Modes:</b>	Immediate Start
<b>Calibration:</b>	Digital calibration through software
<b>Calibration Date:</b>	Automatically recorded within device
<b>Battery Type:</b>	9V lithium battery included; <b>user replaceable</b>
<b>Battery Life:</b>	3 years typical at 1 minute reading rate
<b>Data Format:</b>	<ul style="list-style-type: none"> <li>For Display: °C or °F, %RH</li> <li>For Software: Date and time stamped °C, K, °F, or °R, %RH, mg/mL, Dew Point - °C/K/°F/°R</li> </ul>
<b>Time Accuracy:</b>	± 1 minute/month
<b>Computer Interface:</b>	USB to mini USB, 250,000 baud for standalone operation or RFC1000 required for wireless operation
<b>MadgeTech Software Compatibility:</b>	Standard Software version 4.1.0.0 or later Secure Software version 4.1.3.0 or later
<b>Operating System Compatibility:</b>	Windows XP SP3 or later
<b>Operating Environment:</b>	20 °C to +60 °C (-4 °F to +140 °F) 0 %RH to 95 %RH non-condensing
<b>Dimensions:</b>	3.0 in x 3.5 in x 0.95 in (76.2 mm x 88.9 mm x 24.1 mm) Data logger only
<b>Enclosure Material:</b>	ABS Plastic
<b>Approvals:</b>	US (FCC), CA (IC), CE, South Korea (KCC), China (CMIT), Japan (LCIE)
<b>Alarm:</b>	<p>Programmable high and low limits for temperature and humidity. Alarm is activated when temperature or humidity reaches or exceeds set limits.</p> <p>Alarm Delay: A cumulative alarm delay may be set in which the device will activate the alarm (via LED) only when the device has recorded a user specified time duration of data.</p>
<b>Audible Alarm Functionality:</b>	1 beep per second for reading alarm above/below threshold

**BATTERY WARNING:** Battery may leak, flame or explode if disassembled, shorted, charged, connected together, mixed with used or other batteries, exposed to fire or high temperature. Discard used battery promptly. Keep out of reach of children.

## Ordering Information

MODEL	PART NUMBER	DESCRIPTION
Element HT	901423-A7	Wireless Temperature and Humidity data logger with LCD
RFC1000	901383-00	Wireless RF receiver/repeater. USB to mini USB adapter & power supply included
RFC1000-CE	901338-00	Wireless RF transceiver/repeater, CE approved for Europe. USB to mini USB adapter & power supply included
RFC1000-IP69K	901389-00	Wireless RF transceiver/repeater, splash proof with an IP69K rating. USB to mini USB adapter included
RFC1000 Cloud Relay	901900-00	MadgeTech Cloud Services Data Logging Hub
RFC1000-CE Cloud Relay	901901-00	MadgeTech Cloud Services Data Logging Hub, CE approved for Europe
U9VL-J	901804-00	Replacement battery for Element HT

For Quantity Discounts call (603) 456-2011 or email [sales@madgetech.com](mailto:sales@madgetech.com)

### Countries approved for use, purchase and distribution of the Element HT:

Australia, Austria, Belgium, Bulgaria, Canada, Chile, China, Columbia, Croatia, Cyprus, Czech Republic, Denmark, Ecuador, Estonia, Finland, France, Germany, Greece, Honduras, Hungary, Iceland, Ireland, Israel, Japan, Latvia, Liechtenstein, Lithuania, Luxembourg, Malaysia, Malta, Mexico, New Zealand, Norway, Peru, Poland, Portugal, Romania, Saudi Arabia, Singapore, Slovakia, Slovenia, South Africa, South Korea, Spain, Sweden, Switzerland, Thailand, The Netherlands, Turkey, United Kingdom, United States, Venezuela, Vietnam